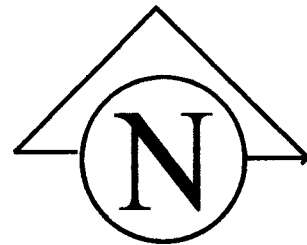


# State of Wyoming Corner Record

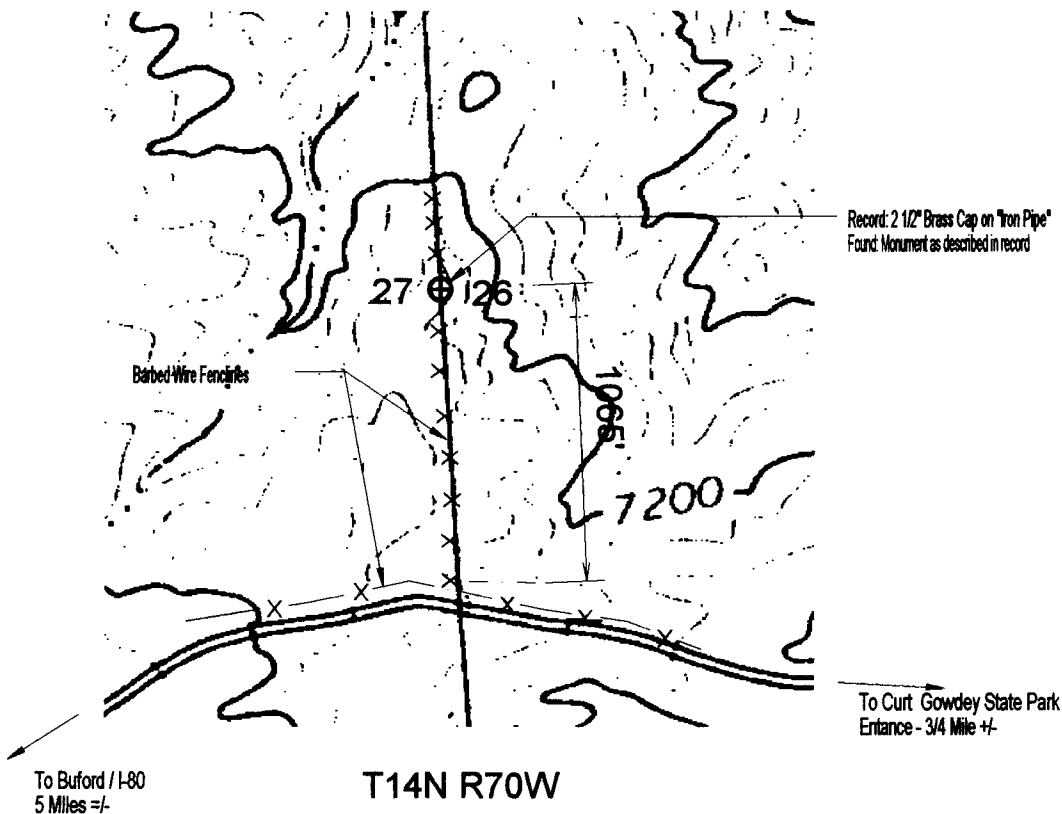
(In compliance with the CORNER PERPETUATION AND FILING ACT, Wyoming Statutes, 1977, Section 36-11-101, et. seq., and the rules and Regulations of the Board of Registration for Professional Engineers and Professional Land Surveyors).

Reverse side of this form may be used if more space is needed.

**Record of original survey and citation of source of historical information ( if corner is lost or obliterated ). Description of corner monumentation evidence found and/or monument and accessories established to perpetuate the location of this corner. Sketch of relative location of monument, accessories, and reference points with course and distance to adjacent corner(s) ( if determined in this survey ). Method and rationale for reestablishment of lost or obliterated corner.**



No Scale  
Date Prepared :  
October 19, 1995



**1721105**  
LARAMIE COUNTY CLERK  
CHEYENNE, WY.  
95 OCT 25 PM 1 23

Date of Field Work Sept-Oct, 1995

Office Reference 9504-BOPU Fence-line-Crystal Lake

**CROSS INDEX DIAGRAM**

	1	2	3	4	5	6	7	8	9	10	11	12	13	14	15	16	17	18	19	20	21	22	23	24	25
A																									
B																									
C																									
D																									
E																									
F																									
G																									
H																									
I																									
J																									
K																									
L																									
M																									
N																									
O																									
P																									
Q																									
R																									
S																									
T																									
U																									
V																									
W																									
X																									
Y																									
Z																									

**Firm / Agency, Address**

Cornerstone Surveying Company  
4005 Snyder Avenue  
Cheyenne, Wyoming  
Telephone Number 307 - 637 - 6958

This corner record was prepared by me or under my direction and supervision.

SEAL & SIGNATURE



Corner Name West 1/4 Section 26 T14N R70W : 6th P.M. Cross Index No. T-17

SBRPEPLS/PLSW: March 1994